

# LED-P10

## UNDERWATER LIGHT OPERATING MANUAL

Voltage: AC 12V Frequency: 50/60Hz Power: 1W

Keep this manual for future reference



### DANGER

#### RISK OF ELECTRICAL SHOCK OR ELECTROCUTION

This underwater light must be installed by a licensed or certified electrician in accordance with the National Electrical Code and all applicable local codes and ordinances. Improper installation will create an electrical hazard which could result in death or serious injury to pool users, installer, or others due to electrical shock, and may also cause damage to property. Read and follow the specific instructions below.

### WARNING

Before installing this underwater light, read and follow all warning notices and instructions accompanying this light. Failure to follow safety warnings and instructions can result in severe injury, death, or property damage.

### IMPORTANT NOTICE

Attention Installer.

This manual contains important information about the installation, operation and safe use of this product. This information should be given to the owner /operator of this equipment.

### Installation instructions

- 1) This underwater light is mounted to the wall in the 2" PVC pipe (Imperial 1/2 Bar, Metric 1.25 Mpa), before installation, selecting a suitable PVC pipe. (Note: Due to a variety of different wall thickness PVC pipe, please refer to Figure 1 to choose appropriate size of tube)
- 2) To ensure pool electrical systems compliance with national act requires, before installation. Electrical system must be made by the official figure licensed electrician or qualified electrician to install.
- 3) Underwater lamp circuit requires leakage protection socket and breaker.
- 4) 2" PVC pipe installation with complete swimming pool flat surface,

underwater lights installed and the water surface distance between 40cm-70cm. (Figure 2)

- 5) When installing underwater lights, be prepared long enough cable (Min 1m) to ensure that maintenance and replacement lamp can be out of the water. (Figure 3)
- 6) When installing underwater lights, Please refer to Figure 4 and Figure 5 of the lamp into the PVC pipe.

### Underwater light care and maintenance.

- 1) Underwater light cannot be turned on more than 1 minute unless there is water.
- 2) Underwater light installed inside the pool should be filled with pool water and cannot be prolonged exposure to sunlight.
- 3) Before installed the underwater lights, check the water lamp is fully immersed in water; electrical boxes and circuit are normal.
- 4) This product cannot be maintained, if there is a problem, please replace the product.
- 5) Before installation of water lights, disconnect all the main electrical power and not to control by wet hands.
- 6) Remove and replace of water light, simply use a flathead screwdriver from the side to eject. (Figure 6)

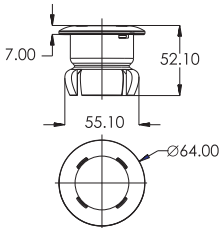


Figure 1

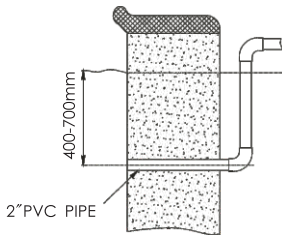


Figure 2

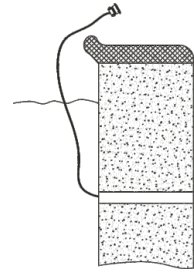


Figure 3

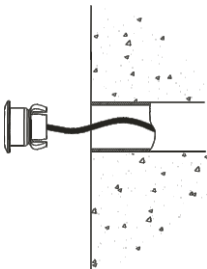


Figure 4

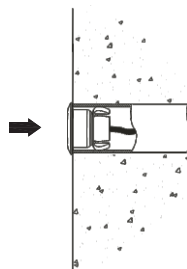


Figure 5

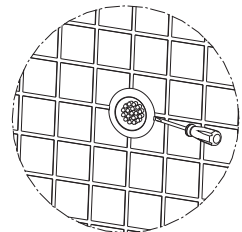


Figure 6